

# A Competitive Advantage for Aerospace Manufacturing

Jet Engine  
& Turbofan  
Fastening

Fastener  
Installation  
& Drilling  
Tools

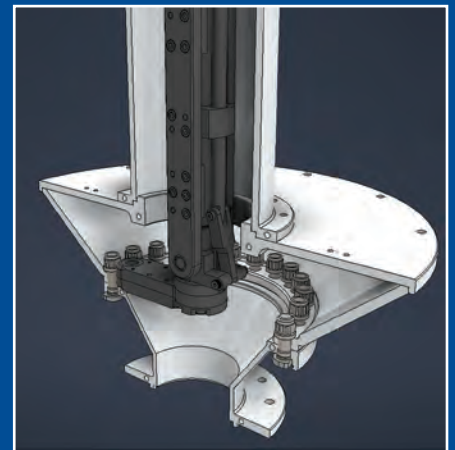
ENGINEERED FASTENING SOLUTIONS

**JEMMS**  
SINCE 1988

## Overcome Hard to Reach Fastener Applications

JEMMS gear-driven tools help **reduce takt time** when accessing fasteners in tight or restricted spaces. Their low-profile design provides the access and mechanical advantage needed where standard sockets or wrenches won't fit.

Ideal for working around obstacles and securing fasteners near engine flanges, fan sections, compressor blades, and shafts within jet engines.



Hold & Drive Attachment



Closed End  
Attachment



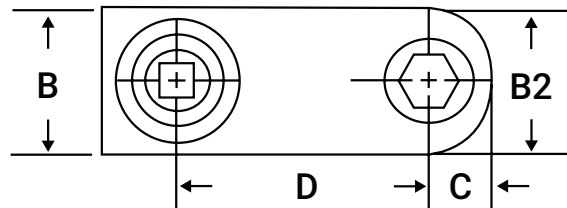
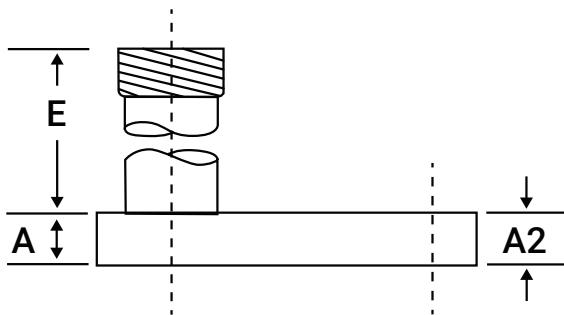
# JEMMS OFFERS STANDARD AND CUSTOM DESIGNS

## Designs Include:

- Adapters required to fit the power tool of your choice
- Lubrication fitting to properly maintain the gear train
- Low profile precision machined gearcase
- Robust gears with heavy duty bearings
- 1 year/250,000 Limited Warranty

## Options Include:

- Overall length to suit your requirement
- Fixed, indexing and custom powertool adapters
- Drop tubes to reach into the compressor safely
- Protective coatings when feasible



## SIMPLE FASHIONED PRODUCT CHART

Part #	# of Gears	Max Torque Output (ft-lbs)	Max Torque Output (Nm)	Max Hex Size (in)	Max Hex Size (mm)	A2 (in)	A2 (mm)	B2 (in)	B2 (mm)	C (in)	C (mm)	D (in)	D (mm)	Gear Ratio :1	Efficiency %
4917	5	1.48	2.00	1/4	6.35	0.250	6.35	0.653	16.59	0.290	7.37	2.833	71.96	1.000	61%
65471-5G	5	3.69	5.00	1/4	6.35	0.344	8.74	0.776	19.71	0.283	7.19	2.356	59.84	0.880	61%
65471-7G	7	3.69	5.00	1/4	6.35	0.344	8.74	0.776	19.71	0.283	7.19	3.606	91.59	0.880	45%
65472-5G	5	3.69	5.00	5/16	7.94	0.344	8.74	0.817	20.75	0.324	8.23	2.406	61.11	1.040	61%
65472-7G	7	3.69	5.00	5/16	7.94	0.344	8.74	0.817	20.75	0.324	8.23	3.656	92.86	1.040	45%
65473-5G	5	3.69	5.00	3/8	9.53	0.344	8.74	0.846	21.49	0.356	9.04	2.438	61.93	1.160	61%
65473-7G	7	3.69	5.00	3/8	9.53	0.344	8.74	0.846	21.49	0.356	9.04	3.688	93.68	1.160	45%
65474-5G	5	3.69	5.00	7/16	11.11	0.344	8.74	0.884	22.45	0.397	10.08	2.479	62.97	1.320	61%
65474-7G	7	3.69	5.00	7/16	11.11	0.344	8.74	0.884	22.45	0.397	10.08	3.729	94.72	1.320	45%
65475-5G	5	3.69	5.00	1/2	12.70	0.344	8.74	0.913	23.19	0.429	10.90	2.510	63.75	1.440	61%
65475-7G	7	3.69	5.00	1/2	12.70	0.344	8.74	0.913	23.19	0.429	10.90	3.760	95.50	1.440	45%



## Connect with TORQU-E and Transform Your Fastening Solutions!

238 Executive Drive, Troy, MI 48083  
Phone: 248-526-8100

Email: [torqu-e@jemmsinc.com](mailto:torqu-e@jemmsinc.com)

Scan to visit our website!

